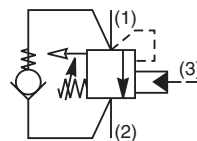
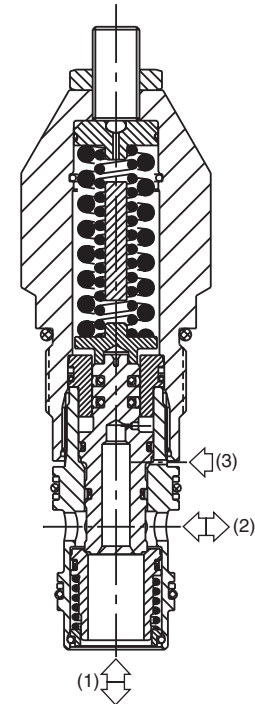


**General Description**

Threaded Cartridge Style Counterbalance Valve. Pilot assisted, designed for motion control applications. For additional information see Technical Tips on pages LM2-LM5.

**Features**

- High flow design with extra dampening
- Spring chamber isolated from system backpressure by double seal, eliminating vent port leakage and need for separate drain line
- Poppet construction for minimal leakage
- Incorporates direct acting relief valve for overload protection
- Includes reverse check valve within body, saving space and minimizing installation cost
- Hardened working parts for maximum durability
- All external parts zinc plated

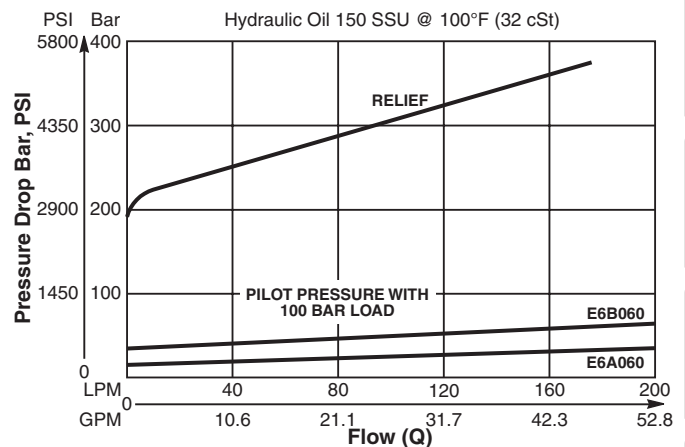


**Specifications**

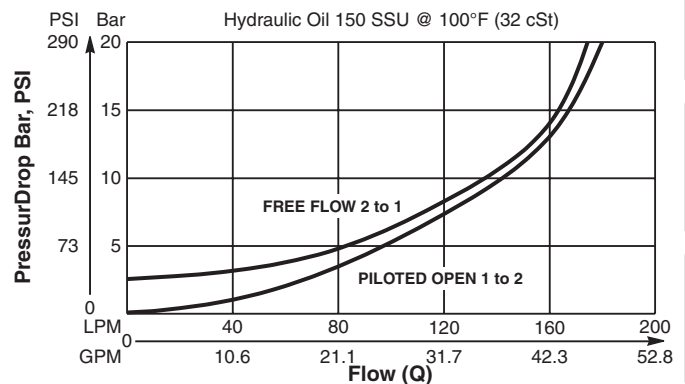
Rated Flow	180 LPM (48 GPM)
Pressure	50 to 350 Bar (725 to 5000 PSI)
Sensitivity: Pressure / Turn	50 Bar (725 PSI)
Pilot Ratio	3 : 1
Cartridge Material	All parts steel. All operating parts hardened steel.
Operating Temp. Range/Seals	-34°C to +121°C (Nitrile) (-30°F to +250°F) -26°C to +204°C (Fluorocarbon) (-15°F to +400°F)
Fluid Compatibility/ Viscosity	Mineral-based or synthetic with lubricating properties at viscosities of 45 to 2000 SSU (6 to 420 cSt)
Filtration	ISO-4406 18/16/13, SAE Class 4
Approx. Weight	0.53 kg (1.17 lbs.)
Cavity	3C (See BC Section for more details)

**Performance Curves**

**Relief & Pilot Performance 1 to 2**

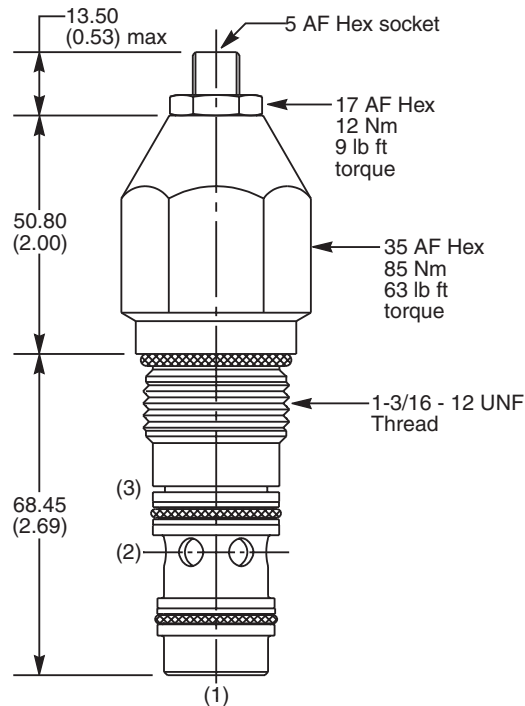


**Pressure Drop vs Flow**



- CV**  
Check Valves
- SH**  
Shuttle Valves
- LM**  
Load/Motor Controls
- FC**  
Flow Controls
- PC**  
Pressure Controls
- LE**  
Logic Elements
- DC**  
Directional Controls
- SV**  
Solenoid Valves
- PV**  
Proportional Valves
- CE**  
Coils & Electronics
- BC**  
Bodies & Cavities
- TD**  
Technical Data

**Dimensions** Millimeters (Inches)



**Ordering Information**

<b>E6</b>	<b>B</b>	<b>060</b>	<b>Z</b>	<b>N</b>	<b>409</b>
Load Control Valve	Pilot Ratio		Adjustment Style	Seals	Suffix Number

**Highlighted** represents preferred options that offer the shortest lead times. Other options may be available, but at extended lead times.

Code	Pilot Ratio
B	3:1

Code	Adjustment Style
Z	Screw Adjust (Standard)

Code	Seals
N	Nitrile

Code	Suffix Number
409	High flow design with extra dampening

Kit	Part Number
Tamper Resistant Cap	TC1130
Nitrile Seal	SK30008N-1
Fluorocarbon Seal	SK30008V-1

Order Bodies Separately  
 See section BC

<b>LB10</b>	<b>069</b>	<b>S</b>
Line Body	Porting	Body Material

Code	Porting
069	1" SAE (main) 1/4" SAE (aux)

Code	Body Material
S	Steel / (5000PSI)

\*Standard valve is set to crack at 215 Bar (3120 PSI). Valve to be set to 1.3 times maximum load induced pressure.

CV
Check Valves
SH
Shuttle Valves
LM
Load/Motor Controls
FC
Flow Controls
PC
Pressure Controls
LE
Logic Elements
DC
Directional Controls
SV
Solenoid Valves
PV
Proportional Valves
CE
Coils & Electronics
BC
Bodies & Cavities
TD
Technical Data